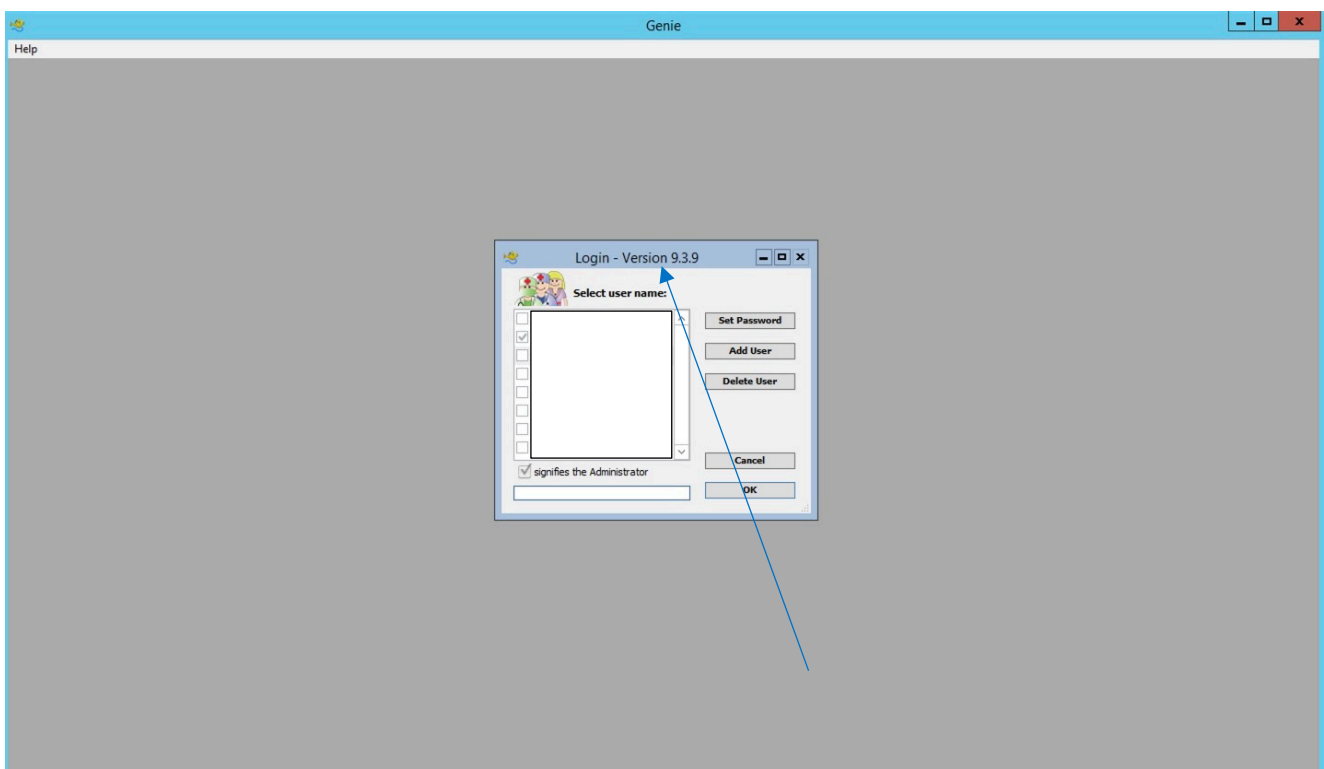


Genie PMS: Which version do I have?

Genie

1. Open Genie

A login pop up box will appear showing you which version you have.



You can also check the Genie Support section: <https://geniesupport.geniesolutions.com.au/hc/en-us> to ensure that you are running the most up to date version.

For all queries, please call HealthLink Customer Support:

Monday to Friday (except public holidays) 8am – 6pm

Phone: 1800 125 036 (option 4) Support email: helpdesk@healthlink.net